

**SPECIFICATION DATA SHEET - AXOLOTL TERRAZZO**  
**For the information of Specifiers and Trades**

**Product Description**

Axolotl Terrazzo is a liquid cementitious application and is applied to form a veneer on a variety of building materials such as customwood, steel, CFC, hardened polyurethane foam, glass and fiberglass without causing damage to the substrate and without the cracking and delamination associated with applying thin layers of concrete. Axolotl Terrazzo is suitable for internal applications only and can be applied onto flat surfaces up to 1600 x 2400mm in size and up to 150mm thick. Aggregate cannot be applied onto the edges of panels, however the edges can be treated in the matching concrete finish.

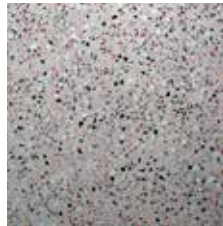
Architects and designers specifying Axolotl Terrazzo can select from our standard range of aggregate sizes, and from the standard aggregate and concrete colours shown, or can specify their own colours and aggregate size for a custom design. In the case of custom combinations, approval artwork and a custom sample may be generated for a small charge.

Axolotl Terrazzo is hand finished and employs the use of natural recycled materials, therefore variations in colour and texture can occur within the range. Axolotl recommends supplying a photograph with the specification and a sample of the exact finish you wish to match at the time of order. Axolotl will aim to match the sample provided however due to the nature of the product, the finished item may vary from the sample in terms of colour and texture.

Typical applications of Axolotl Terrazzo include counter fronts, feature walls, internal doors, lift interiors and splashbacks.

**Specification Example**

Manufacturer: Axolotl  
 Product: Terrazzo  
 Type: Pantheon (white base)  
 Texture: Cast  
 Surface effect: Red, blue & white aggregate  
 Top coat: Matte



Approved Sample

**Test Results**

Simultaneous Determination of Ignitability, Flame Propagation, Heat Release and Smoke Release  
 CSIRO and NATA tested in accordance with Australian Standard 1530.3-1989, Simultaneous Determination of Ignitability, Flame Propagation, Heat Release and Smoke Release.

Ignitability Index (0-20)	Spread of Flame Index (0-10)	Heat Evolved Index (0-10)	Smoke Developed Index (0-10)
0	0	0	2

**Household Chemical Resistance**

Axolotl Terrazzo has undergone 8 hrs concentrated exposure to common household cleansers all recording no effect to the Axolotl coat.

Additional Independent testing was conducted by AWATA Product testing with the following results:

Chemical Sample Staining Rating

- Ammonia 5
- Bleach 5
- 10% citric acid solution 5
- Vinegar 5
- Windex 5
- Betadine 5

Where 5 equals no change and 1 equals very significant change. Each chemical was applied to the sample and allowed to stand for 1 hour. Note that it is the sealer coat that is offering protection and it is important that the sealer coat is not scratched through, cut or any other alteration to expose the concrete underneath.

**Durability**

The physical and chemical tests indicate the coatings have excellent impact resistance, high water pressure washin and very good chemical resistance to the more popular household cleansers.

## **Maintenance**

Clean Axolotl Terrazzo surfaces with warm water and mild detergents only. Never use any thinners, caustics or powder cleansers. Solvent resistance for removal of graffiti is very good with the application of the Axolotl topcoat, however consultation with Axolotl is advised regarding the use of these products for cleaning.

## **General Surface Preparation**

Surfaces to be finished must be supplied in their raw state, i.e. no paint, varnishes etc. and must be dry and free of oils, rust or scale. Surfaces should also be kept clean and free from any contaminants that could affect the concrete. Use fillers recommended below for particular materials. Do not use oil-based putties or fillers. Imperfections in surfaces caused by jointing, fixings and mechanical damage will copy into the finished surface unless carefully repaired.

Axolotl Terrazzo will penetrate into fixing holes, which should have adequate clearance or be redrilled after the terrazzo is applied. Components should be sized to allow for the thickness of the terrazzo, approx 0.5mm. Axolotl Terrazzo must be applied prior to any adjacent areas being treated. Indicate those areas that are to receive specialized masking.

As Axolotl Terrazzo is applied by hand, the completed surface cannot be entirely uniform. These small irregularities add to the natural and authentic appearance of the finish.

## **Requirements for Substrates**

It is recommended that the highest quality substrate be used at all times. Axolotl are not always able to determine the quality of a product when it is delivered to us however if it is obvious we will bring it to your attention before we commence work. Axolotl do not recommend grained substrates such as timber or ply. Non-grain substrates such as CFC, Masonite and Phenolic resin are preferred.

Sheet metal - Surfaces must be clean and primed with a specified metal primer supplied and/or applied by Axolotl to achieve a satisfactory bond. The minimum thickness recommended for the metal substrate is approximately 2mm.

Painted metal surfaces are not suitable for Axolotl Terrazzo, yet they can be sanded back to the raw substrate and coated.

Customwood and CFC - Use MDF and CFC of 9mm thickness or greater to prevent warpage. Screw and glue all joints, and use solvent to wipe off any excess glue. Fill all cracks, holes, imperfections etc. with Polyfiller or Auto Body Filler and sand to a level surface. Radius all sharp and square edges to a minimum of 1mm.

Polystyrene - Lightly sand using 120-grade sandpaper. Imperfections in the polystyrene may read into the finish. Epoxy Resin hardener coat must be applied over surfaces to be treated and should be sanded to desired texture for Axolotl to coat.

Fiberglass - Wash down surfaces with acetone then sand to a non-glossy surface using 120-grade sandpaper.

Plastics - Surface should be heavily scoured or sanded to obtain greater bonding. Discuss suitability with Axolotl first. Plastics can expand and contract over large surface areas where larger panels are used.

\*Note items larger than 1600mm w x 2400mm l x 150mm h cannot be treated in Axolotl Terrazzo.

## **NOTE FOR SPECIFIERS -**

**PLEASE ENSURE SPECIFICATION SHEET IS COPIED & ATTACHED TO TENDER DRAWINGS FOR THE REFERENCE OF ALL RELEVANT TRADES.**

## **For further information, technical assistance or costing please contact:**

Company	Axolotl Group Pty Ltd
Address	6/73 Beauchamp Road, Matrville, NSW, 2036.
Phone	02 9666 1207
Fax	02 9666 1210
Email	info@axolotl.com
Website	www.axolotl.com.au